

# Logomark



**solo**  
NEW YORK



# TABLE OF CONTENTS

## BACKPACKS

5 | KL2054

7 | KL2050

9 | KL2055

11 | KL2043

## HYBRIDS

13 | KCC1804B

13 | KL2035B

## BRIEFCASES

15 | KL1014

17 | KL1015

19 | KL1049

21 | KL1022

## ROLLING CASES

23 | KL4013

## SLEEVES

25 | KL0001

27 | KL0006

29 | KL0010



# 2024

## BEST LAPTOP BACKPACK FOR TRAVEL

FEATURED IN  
**People TESTED**



Made from  
Recycled Materials



Sanitizable  
Surface





# RE:DEFINE BACKPACK

## FEATURES

- Exterior material made from recycled PET bottles
- Fully padded 15.6" laptop compartment with lockable zippers
- Checkpoint friendly design allows you to pass through airport security faster
- External USB port
- Sanitizable surface cleans easily with anti-bacterial wipes
- RFID data protection pocket
- Internal tablet pocket
- Headphone port
- Back strap slides over luggage handle

## SPECS

STYLE

KL2054

COLOR

Black, Grey

MATERIAL

Recycled PET Polyester

AS LOW AS

\$93.99 (c)



**WARNING:** Cancer and Reproductive Harm

For more information go to: [www.P65Warnings.ca.gov](http://www.P65Warnings.ca.gov)







# RE:COVER BACKPACK

## FEATURES

- Materials made from recycled PET bottles
- Sanitizable surface cleans easily with anti-bacterial wipes
- Fully padded compartment fits laptops up to 15.6"
- Back strap slides over luggage handle
- Quick access pocket
- Front zippered pocket with organizer section & key clip
- Side mesh pockets
- Black camo lining

## SPECS

STYLE

KL2050

COLOR

Grey

MATERIAL

Recycled PET Polyester

AS LOW AS

\$77.99 (c)



**WARNING:** Cancer and Reproductive Harm

For more information go to: [www.P65Warnings.ca.gov](http://www.P65Warnings.ca.gov)







# RE:SOLVE BACKPACK

## FEATURES

- Materials made from recycled PET bottles
- Antimicrobial coating helps prevent the growth of bacteria
- Water resistant coating
- Sanitizable surface cleans easily with anti-bacterial wipes
- Fully padded compartment fits laptops up to 15.6"
- Front organization pocket
- Side mesh pockets
- Padded adjustable shoulder straps
- Black camo lining

## SPECS

STYLE	MATERIAL
KL2055S	Recycled PET Polyester
COLOR	AS LOW AS
Grey	\$59.99 (c)



**WARNING:** Cancer and Reproductive Harm

For more information go to: [www.P65Warnings.ca.gov](http://www.P65Warnings.ca.gov)





# GRAND TRAVEL TSA BACKPACK

## FEATURES

- Checkpoint friendly design allows you to pass through airport security faster
- Fully padded 17.3" laptop compartment
- Large main compartment
- Front quick pocket and side mesh pockets
- Back panel slides over luggage handle
- Multiple carry handles
- Padded back & back straps
- Compression straps in main compartment for tighter packing

## SPECS

STYLE

KL2043

COLOR

Grey

MATERIAL

Polyester

AS LOW AS

\$138.99 (c)







# DUANE HYBRID BRIEFCASE

## FEATURES

- Briefcase transforms into backpack
- Fully padded 15.6" laptop compartment
- Internal tablet pocket
- Large front pocket with organizer section
- Padded carry handles with magnetic snaps
- Removable/adjustable shoulder strap
- Hideaway padded backpack straps for added comfort

## SPECS

STYLE  
KC1804B  
KL2035B  
COLOR  
Grey, Black

MATERIAL  
Polyester  
AS LOW AS  
\$78.99 (c)



**WARNING:** Cancer and Reproductive Harm

For more information go to: [www.P65Warnings.ca.gov](http://www.P65Warnings.ca.gov)



# ACE SLIM BRIEF

## FEATURES

- Fully padded 15.6" laptop compartment
- Internal tablet pocket
- Full length front zippered pocket
- Full size front zip-down organizer section
- Orange interior lining
- Adjustable shoulder strap
- Back strap slides over luggage handle

## SPECS

STYLE	MATERIAL
KL1014	Polyester
COLOR	AS LOW AS
Black/Orange	\$46.99 (c)



**WARNING:** Cancer and Reproductive Harm

For more information go to: [www.P65Warnings.ca.gov](http://www.P65Warnings.ca.gov)





# ASTOR SLIM BRIEF

## FEATURES

- Fully padded 15.6" laptop compartment
- Internal tablet pocket
- Full size front zip-down organizer section
- Back strap slides over luggage handle
- Padded carry handles with magnetic snaps
- Adjustable shoulder strap

## SPECS

STYLE	MATERIAL
KL1015	Polyester
COLOR	AS LOW AS
Grey	\$47.99 (c)







# RIVINGTON SLIM BRIEF

## FEATURES

- Fully padded 15.6" laptop compartment
- Interior organizer section
- Back strap slides over luggage handle
- Front zippered pockets
- Adjustable shoulder strap

## SPECS

STYLE  
KL1049  
COLOR  
Grey

MATERIAL  
Polyester  
AS LOW AS  
\$47.99 (c)









# PARAMOUNT RETRACTABLE STRAP BRIEFCASE

## FEATURES

- Fully padded laptop compartment fits up to 16"
- Retractable shoulder strap automatically retracts into case
- Back strap slides over luggage handle
- Full length front zippered pocket
- Full size front zip-down organizer section
- Interior organizer section in main compartment
- File compartment
- Padded carry handles

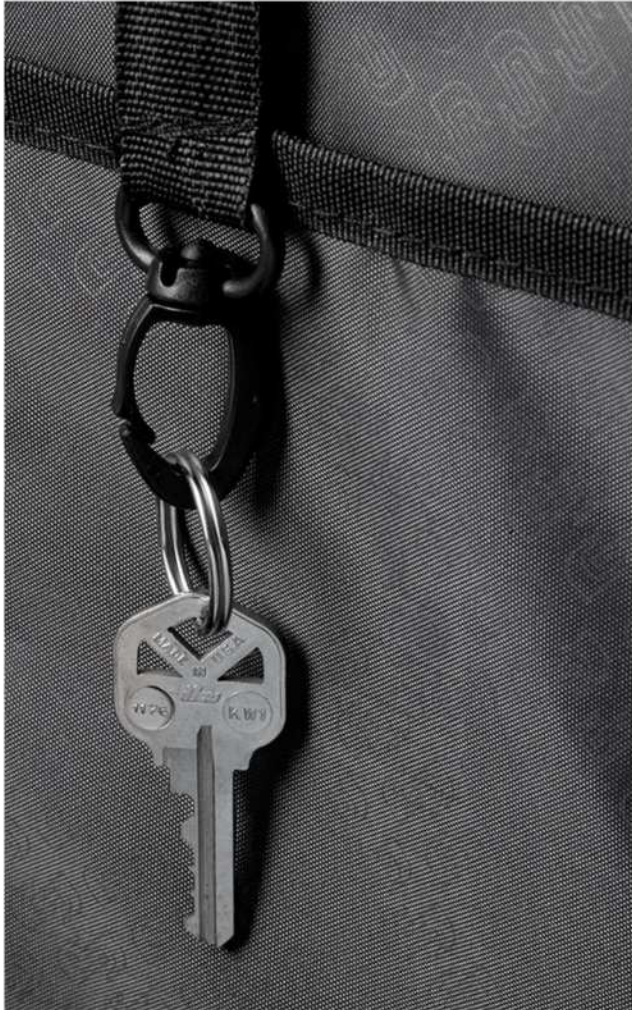
## SPECS

STYLE	MATERIAL
KL1022	Polyester
COLOR	AS LOW AS
Black	\$126.99 (c)



**WARNING:** Cancer and Reproductive Harm

For more information go to: [www.P65Warnings.ca.gov](http://www.P65Warnings.ca.gov)





# EMPIRE ROLLING CASE

## FEATURES

- Fully padded 17.3" laptop compartment
- Internal tablet pocket
- Front zippered pocket
- Front zip-down organizer section with key clip
- Divided file compartment
- Padded carry handles
- Hidden push-button telescoping handle system
- Easy glide wheels

## SPECS

STYLE	MATERIAL
KL4013	Polyester
COLOR	AS LOW AS
Black	\$164.99 (c)



**WARNING:** Cancer and Reproductive Harm

For more information go to: [www.P65Warnings.ca.gov](http://www.P65Warnings.ca.gov)







# BOND SLEEVE

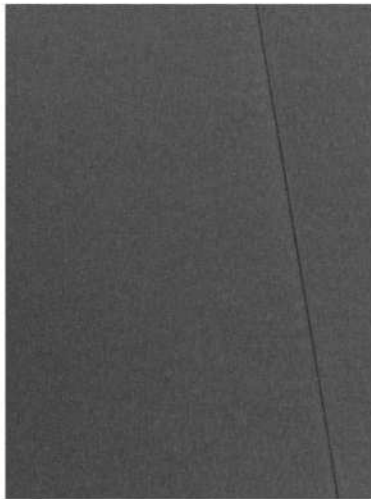
## FEATURES

- Fully padded 13.3" laptop sleeve
- Checkpoint friendly design allows you to pass through airport security faster
- Scratch resistant lining
- Lightweight construction

## SPECS

STYLE	MATERIAL
KL0001B	Neoprene
KL0001V	AS LOW AS
COLOR	\$37.99 (c)
Black, Navy	





# OSWALD SLEEVE

## FEATURES

- Fully padded 13.3" laptop sleeve
- Checkpoint friendly design allows you to pass through airport security faster
- Scratch resistant lining
- Lightweight construction
- Full panel front pocket

## SPECS

STYLE	MATERIAL
KL0006B	Polyester
KL0006V	AS LOW AS
COLOR	\$40.99 (c)
Black, Navy	







# RE:FOCUS 15.6" SLEEVE

## FEATURES

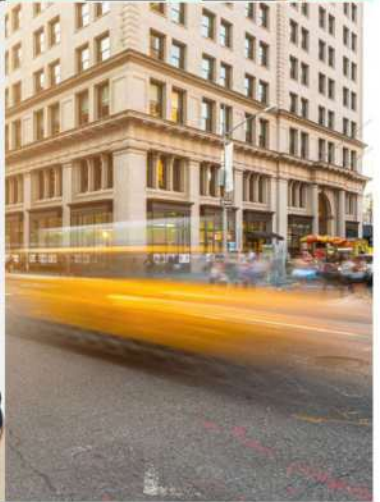
- Material made from recycled PET bottles
- Sanitizable surface cleans easily with anti-bacterial wipes
- Fully padded 15.6" laptop sleeve
- Full length front zippered pocket
- Back slip pocket
- Black camo lining

## SPECS

STYLE	MATERIAL
KL0010	Recycled PET Polyester
COLOR	AS LOW AS
Grey	\$39.99 (c)







  
**Logomark**  
[www.logomark.com/soloneyork](http://www.logomark.com/soloneyork)  
**solo**  
NEW YORK