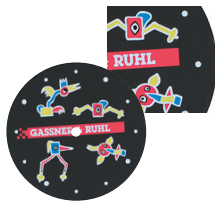


DIAL IMPRINT METHODS & SETUP CHARGES

IMP1 Silkscreen/Pad Printing (min. 12 pcs.)



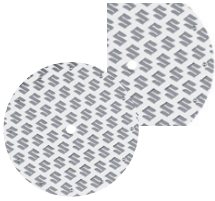
Excellent Imprint Quality.  
Precise PMS matching at no charge.  
Price includes up to 4 colors.  
Set up charge 1st color: \$70.00 (g)  
Each additional color: \$25.00 (g)  
No Running Charges up to 4 Colors  
Standard Production time:  
20 working days.

IMP5 Photo Process (min. 50 pcs.)



High resolution reproduction  
of an actual photograph  
or multi-color logo.  
No PMS matches.  
Set up charge: \$150.00 (g)  
Run charge per dial: \$1.25 (g)  
Production time: 20 working days.

IMP6 3-Dimensional Raised Etching Process (min. 50 pcs.)



Ideal for elegant effects-  
Available on Silver/Silver,  
Gold/Gold, Gold/Silver.  
Set up charge: \$175.00 (g)  
Run charge per dial: \$1.75 (g)  
Production time: 20 working days.

IMP8 Mirror Etching (min. 50 pcs.)



Logo can appear in silver or gold  
mirror finish or cobblestone finish.  
Set up charge: \$120.00 (g)  
Run charge per dial: \$1.50(g)  
Production Time: 20 working days.

Less Than Minimum Charges: \$100.00 (g) per decoration location.  
Rush Charges: 10% of unit cost per unit or \$80.00 (g) whichever is greater.

CASE BACK BRANDING



**CB1 - Logo Etching (Absolute min. 50 pcs)**  
Can be combined with personalization and  
serial numbering  
Setup charge: \$75.00 (g)  
Run charge per piece:  
50 Units: \$3.50 (g)  
100 Units: \$2.50 (g)  
Production time: 20 working days.



**CB2 - Personalization (Absolute min. 50 pcs)**  
Individually etched: MEN'S-15 characters  
WOMEN'S-10 characters  
(Varies upon case back size)  
Setup charge (per line): \$60.00 (g)  
Run charge per piece per line: \$3.50 (g)  
Production time: 20 working days.



**CB3 - Serial Numbering (Absolute min. 100 pcs)**  
Individually etched with a  
sequential serial number  
Setup charge: \$60.00 (g)  
Run charge per piece: \$2.50 (g)  
Production time: 20 working  
days.

WATCH OPTIONS



**A05 - Precision Date Display: (min. 12 pcs)**  
\$4.50 (g) Available on most three handed watches.  
(Excludes slim line.)



**A07 - Dial Personalization: (min. 50 pcs)**  
Set up charge (silkscreen only):  
\$60.00 (g)/\$3.95 (g) per name

PRE-PRODUCTION OR SPEC SAMPLE

Silk Screen	\$60.00 (g) + Set up charge + Item cost
3-Dimensional Etching	\$70.00 (g) + Set up charge + Item cost
Photo Process	\$80.00 (g) + Set up charge + Item cost
Mirror Etching	\$80.00 (g) + Set up charge + Item cost
Offset Printing	\$80.00 (g) + Set up charge + Item cost

CASE BACK BRANDING

Not Available.

STRAP IMPRINT OPTIONS



**S01-Debossed Leather (min. 250 pcs.)**  
Tooling: \$275.00 (g)  
Run Charge:  
\$2.00 (g) Per Side



**S03-Silkscreen on Leatherette Sport Patch (min. 250 pcs.)**  
Set up charge: \$75.00 (g)  
Run charge: \$0.60 (g)



**S04-SilkScreen Printed Plastic / RUBBER Strap (min. 250 pcs.)**  
Printed top or bottom  
Set up charge:  
\$75.00 (g) 1st color / per side.  
\$40.00 (g) each addl. color per side  
Run charge:  
\$0.60 (g) per color/per side  
NOTE: Please check on charges for  
full color process imprint.



**S02-Embroider Nylon Sport Patch (min. 250 pcs.)**  
Tooling: \$200.00 (g)  
Run charge:  
\$1.00 (g) per piece



**S07-Safety Buckle Etching (min. 50 pcs.)**  
Tooling: \$75.00 (g)  
Run Charge: \$2.95 (g) per piece

50% OF ORIGINAL SET UPS APPLY ON REPEAT ORDERS